



62 Beresford Road Lilydale VIC

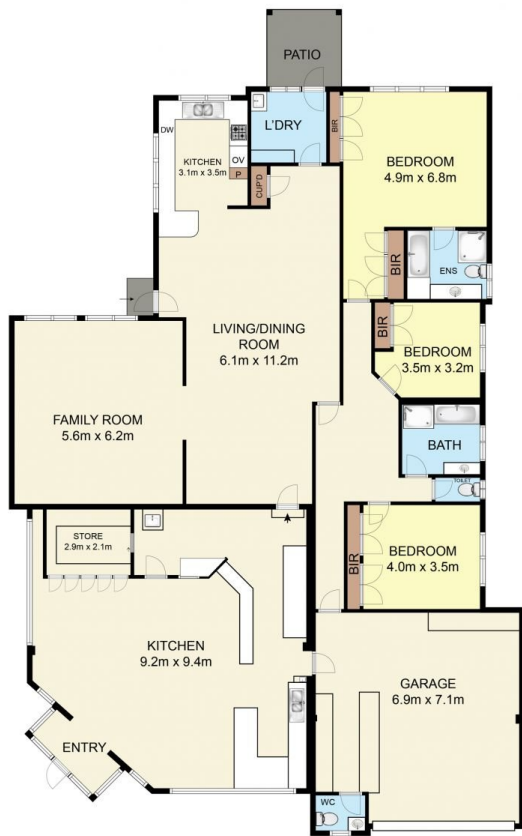
- Retail Shop with 3 Bedroom Residents
- 95sqm or 1022ft2 approx. of Shop Space
- Plenty of Parking
- 3 Bedrooms with BIR's
- 2 Bathrooms
- Heating & Cooling throughout
- \$3,950.00 per calendar month plus GST plus Outgoings

Please call Brad Knight on 0427 301 538 to arrange an inspection today.

Type	: Retail
Price	: \$3,950.00 per month + GST
Building Size	: 1060 sqm
View	: https://www.nobleknight.com.au/lease/vic/east/lilydale/commercial/retail/8175907



Brad Knight
03 9730 1788



62 Beresford Road, Lilydale, VIC, 3140
TOTAL APPROX. FLOOR AREA 331 SQ.M

Whilst every attempt has been made to ensure the accuracy of the floor plan contained here, measurements of doors, windows, rooms and any other items are approximate and no responsibility is taken for any error, omission, or misstatement. This plan is for illustrative purposes only and should be used as such by any prospective purchaser.