



Noble Knight  
Your Property Our Care



## 22 Old Kinglake Road Steels Creek VIC

7 🏠 4 🚗 4 🚗

Nestled on 76.6 acres approx. of breathtaking countryside, "Rivendell" is a charming 4-bedroom split-level homestead with a rich history, accompanied by a versatile 3-bedroom cottage. This unique property offers endless possibilities for multi-generational living or guest accommodation.

The main residence features a spacious master bedroom with an ensuite and walk-in robe, three additional bedrooms; one with ensuite, multiple living zones and a modern country-style kitchen with stainless steel appliances and imported granite benchtops. Year-round comfort is ensured with gas ducted heating, a Jindara wood heater, an open fireplace, and 3 reverse cycle air conditioners. The wrap-around verandah on 3 sides offers a perfect entertaining space with stunning views of the valley amongst impressive established gardens.

**Type** : Rural  
**Price** : \$2,650,000 - \$2,950,000  
**Land Size** : 76.6 Acres  
**View** : <https://www.nobleknight.com.au/sale/vic/yaradandenong-ranges/steels-creek/residential/rural/8171790>



**Anthony Knight**  
03 5797 2500

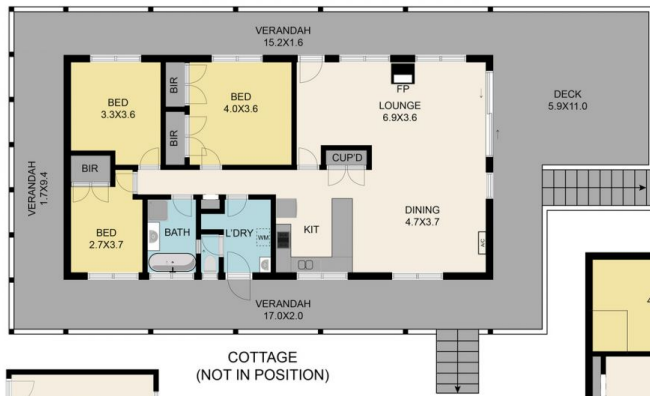


**Megan Tiberi**  
03 9730 1788

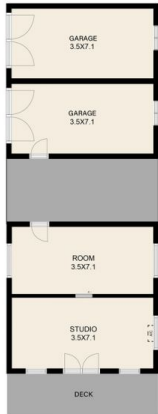
[For full version visit the website](https://www.nobleknight.com.au)

<https://www.nobleknight.com.au>

0397355677



COTTAGE  
(NOT IN POSITION)



SHED  
(NOT IN POSITION)



GROUND FLOOR



FIRST FLOOR

22 Old Kinglake Road, Steels Creek, VIC, 3775

TOTAL APPROX. FLOOR AREA 409 SQ.M

Whilst every attempt has been made to ensure the accuracy of the floor plan contained here, measurements of doors, windows, rooms and any other items are approximate and no responsibility is taken for any error, omission, or misstatement. This plan is for illustrative purposes only and should be used as such by any prospective purchaser.



GROUND FLOOR



FIRST FLOOR

22 Old Kinglake Road, Steels Creek, VIC, 3775

Whilst every attempt has been made to ensure the accuracy of the floor plan contained here, measurements of doors, windows, rooms and any other items are approximate and no responsibility is taken for any error, omission, or misstatement. This plan is for illustrative purposes only and should be used as such by any prospective purchaser.