



**1/1355 Healesville- Koo Wee Rup Road Woori Yallock VIC**

**2** **1** **1**

Discover the key to a relaxed, easy lifestyle in this charming single-level unit, perfectly positioned across from Woori Yallock Primary School. Whether you're starting your property journey, looking to downsize, or seeking a peaceful retreat with lovely views, this home offers the ideal setting.

The open-plan layout seamlessly integrates the living, dining, and kitchen areas. This space flows effortlessly onto a delightful courtyard and low-maintenance gardens, perfect for enjoying the outdoors.

Two bedrooms are thoughtfully placed off the main living area. The master bedroom boasts built-in robes and has direct access to a Jack-and-Jill style bathroom with toilet and laundry facilities. Additional features of this home

**Type** : Unit  
**Price** : \$490,000-\$530,000  
**Land Size** : 234 sqm  
**View** : <https://www.nobleknight.com.au/sale/vic/yaradandenong-ranges/woori-yallock/residential/unit/8109559>



**Anthony Knight**  
03 5797 2500

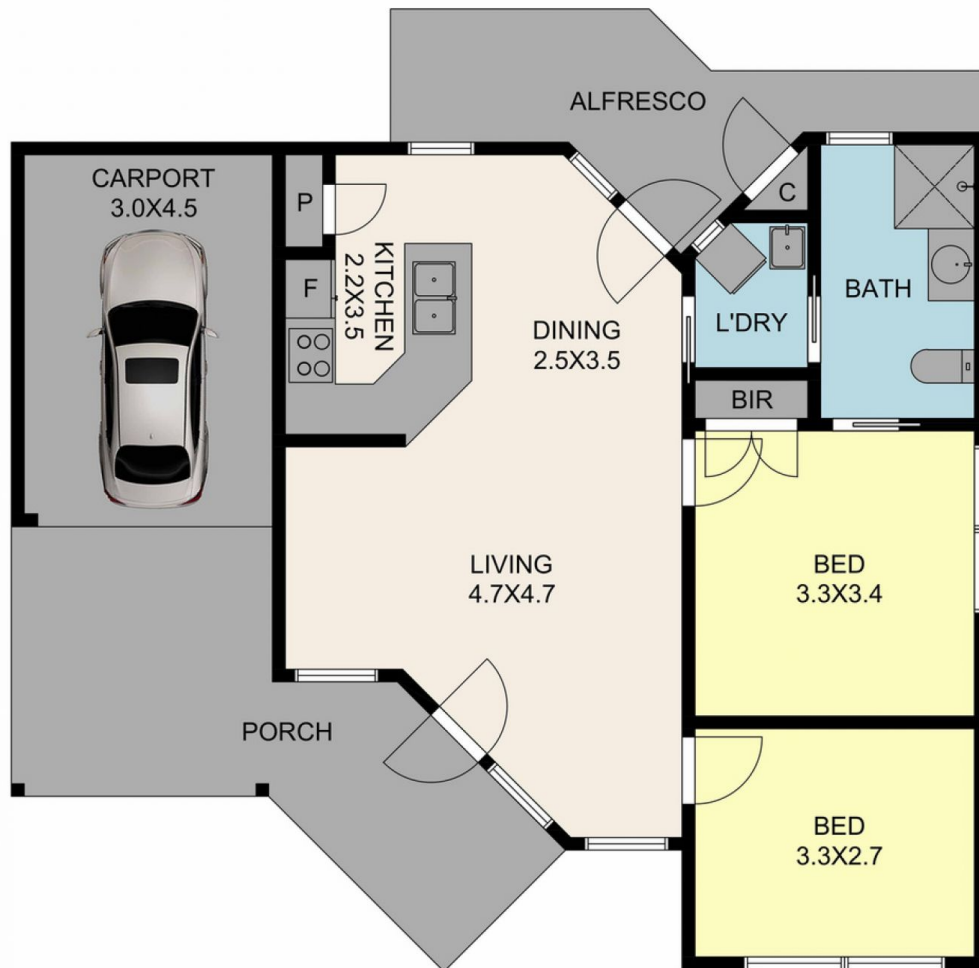
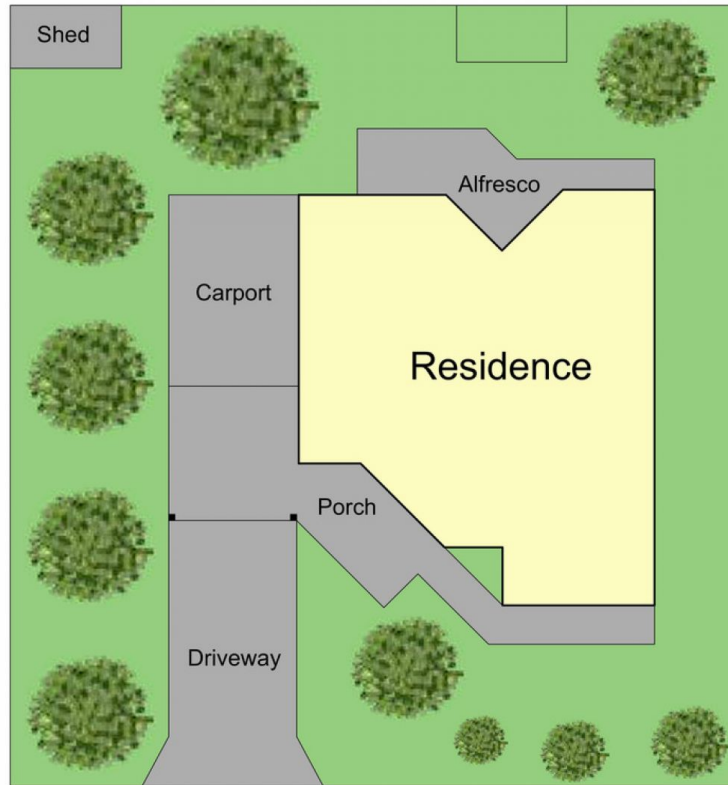


**Damian Ford**  
03 9735 5677

[For full version visit the website](https://www.nobleknight.com.au)

<https://www.nobleknight.com.au>

0397355677



1/1355 Healesville-koo-wee-rup Rd, Woori Yallock

TOTAL APPROX. FLOOR AREA 65 SQ.M

Whilst every attempt has been made to ensure the accuracy of the floor plan contained here, measurements of doors, windows, rooms and any other items are approximate and no responsibility is taken for any error, omission, or misstatement. This plan is for illustrative purposes only and should be used as such by any prospective purchaser.