



**6 Chris Drive Lilydale VIC**

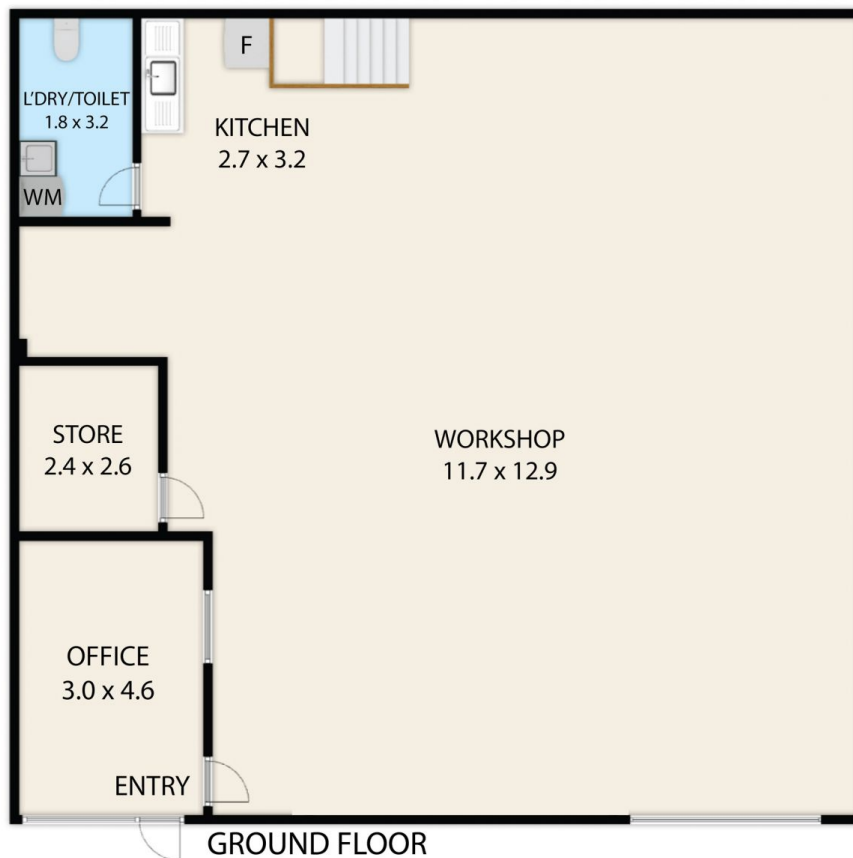
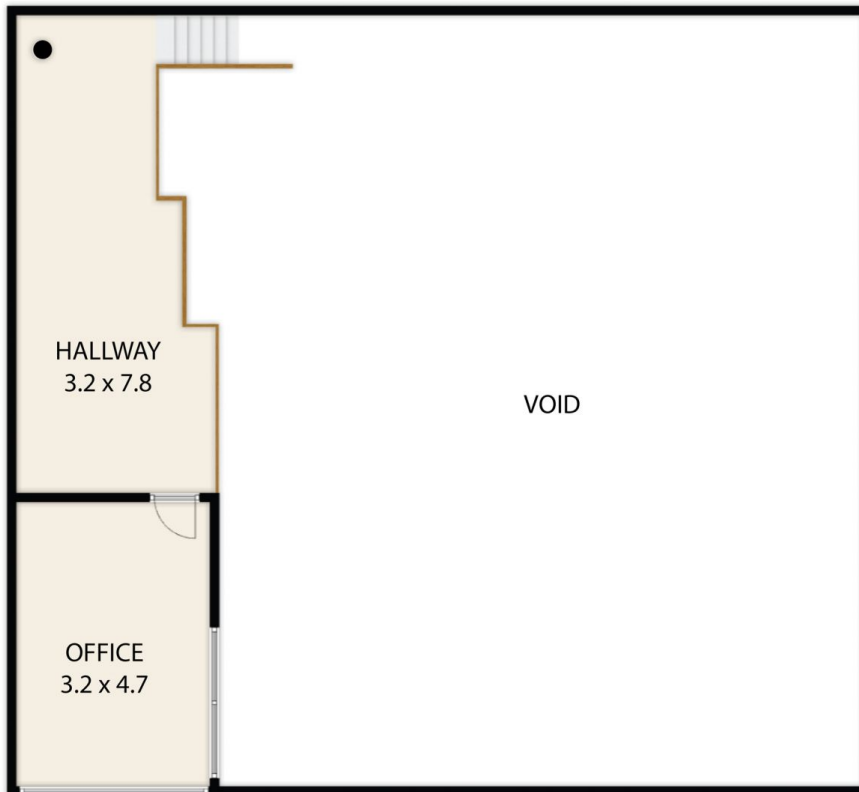
- ? 165sqm or 1775ft2 of Warehouse Space
- ? First Floor Office Space (See attached Plan)
- ? Industrial 1 Zone
- ? Great Access with Ample Parking
- ? Leased to 31st October 2024 with 2 year option
- ? Asking \$490,000 to \$530,000

**Type** : Industrial  
**Price** : \$490,000-\$530,000  
**Building Size** : 165 sqm  
**View** : <https://www.nobleknight.com.au/sale/vic/east/lilydale/commercial/industrial/8099671>

Please contact Bradley Knight on 0427 301 538 for an inspection today.



**Brad Knight**  
**03 9730 1788**



6 Chris Drive, Lilydale 3140  
TOTAL APPROX. FLOOR AREA 215 SQ.M

Whilst every attempt has been made to ensure the accuracy of the floor plan contained here, measurements of doors, windows, rooms and any other items are approximate and no responsibility is taken for any error, omission, or misstatement. This plan is for illustrative purposes only and should be used as such by any prospective purchaser.