



14 East Street Yea VIC

4 3 2

Exceptional find is this large family home on the edge of town overlooking the scenic reserve. The home sits on a lovely size parcel of land consisting of 1384 m2 (approx.) of prime real estate.

The 14-year-old home has numerous living zones with formal lounge room, open plan meals family room and a separate wing that could accommodate extended family or independent living. The home overall has 4 bedrooms, 3 bathrooms and has the space for a growing family.

The kitchen is appointed with stainless steel appliances and an abundance of storage space. This home is equipped with ducted heating and cooling and has a multitude of solar panels to save on the electricity bill along with wood heating.

The exterior of this home offers multiple covered alfresco

Type : House
Price : \$ 830,000
Land Size : 1384 sqm
View : <https://www.nobleknight.com.au/sale/vic/shepparton-central-north/yea/residential/house/7587212>



Anthony Knight
03 5797 2500

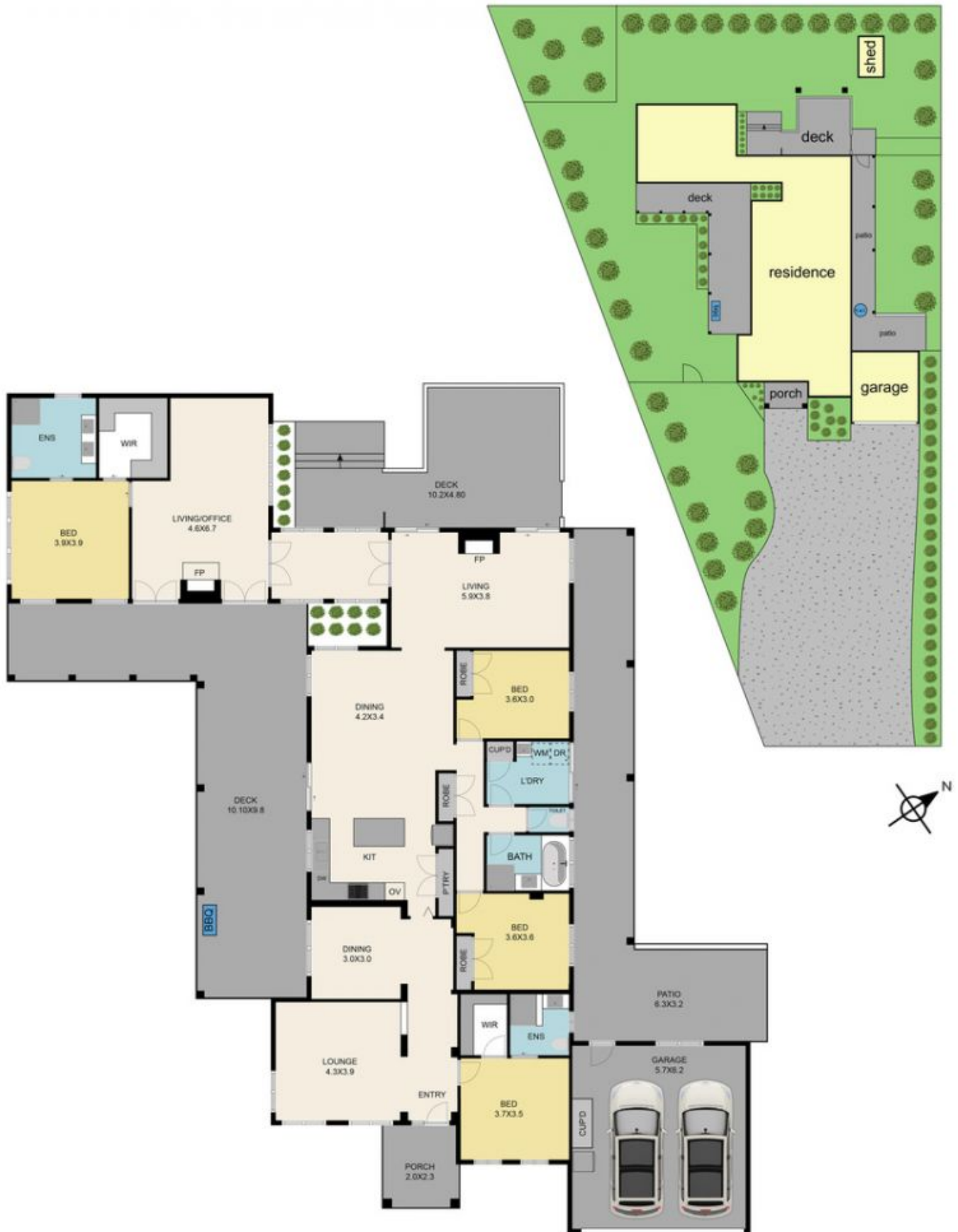


Melissa Bell
03 5797 2500

[For full version visit the website](https://www.nobleknight.com.au)

<https://www.nobleknight.com.au>

0397355677



14 East Street, Yea 3717

TOTAL APPROX. FLOOR AREA 270 SQ.M

Whilst every attempt has been made to ensure the accuracy of the floor plan contained here, measurements of doors, windows, rooms and any other items are approximate and no responsibility is taken for any error, omission, or misstatement. This plan is for illustrative purposes only and should be used as such by any prospective purchaser.



14 East Street, Yea 3717
TOTAL APPROX. FLOOR AREA 270 SQ.M

Whilst every attempt has been made to ensure the accuracy of the floor plan contained here, measurements of doors, windows, rooms and any other items are approximate and no responsibility is taken for any error, omission, or misstatement. This plan is for illustrative purposes only and should be used as such by any prospective purchaser.

