



**111-115 High Street Yea VIC**

4 🏠 3 🚗 6 🚗

"Beaufort Manor" an iconic landmark of the Yea township and historical landmark located in the main street of Yea with a land size of approximately 2855m2 of land in a prominent position.

**Price** : \$1,950,000 - \$2,150,000  
**Land Size** : 2855 sqm  
**View** : <https://www.nobleknight.com.au/sale/vic/shepparton-central-north/yea/residential/house/7516590>

The property borders on the Great Victorian Rail Trail and Yea Public Gardens and is just a short walk from the shopping centre. Zoned GRZ1 & C1Z allows potential of a variety of commercial uses (STCA).

The impressive foyer with reception area and bar leads the way into the two formal lounge areas with bay window and beautiful chandeliers and leadlight. Enter the "Grand Ballroom" where there is enough space for 100 seated guests and a dance floor sits hidden under the carpet until required.



**Anthony Knight**  
03 5797 2500

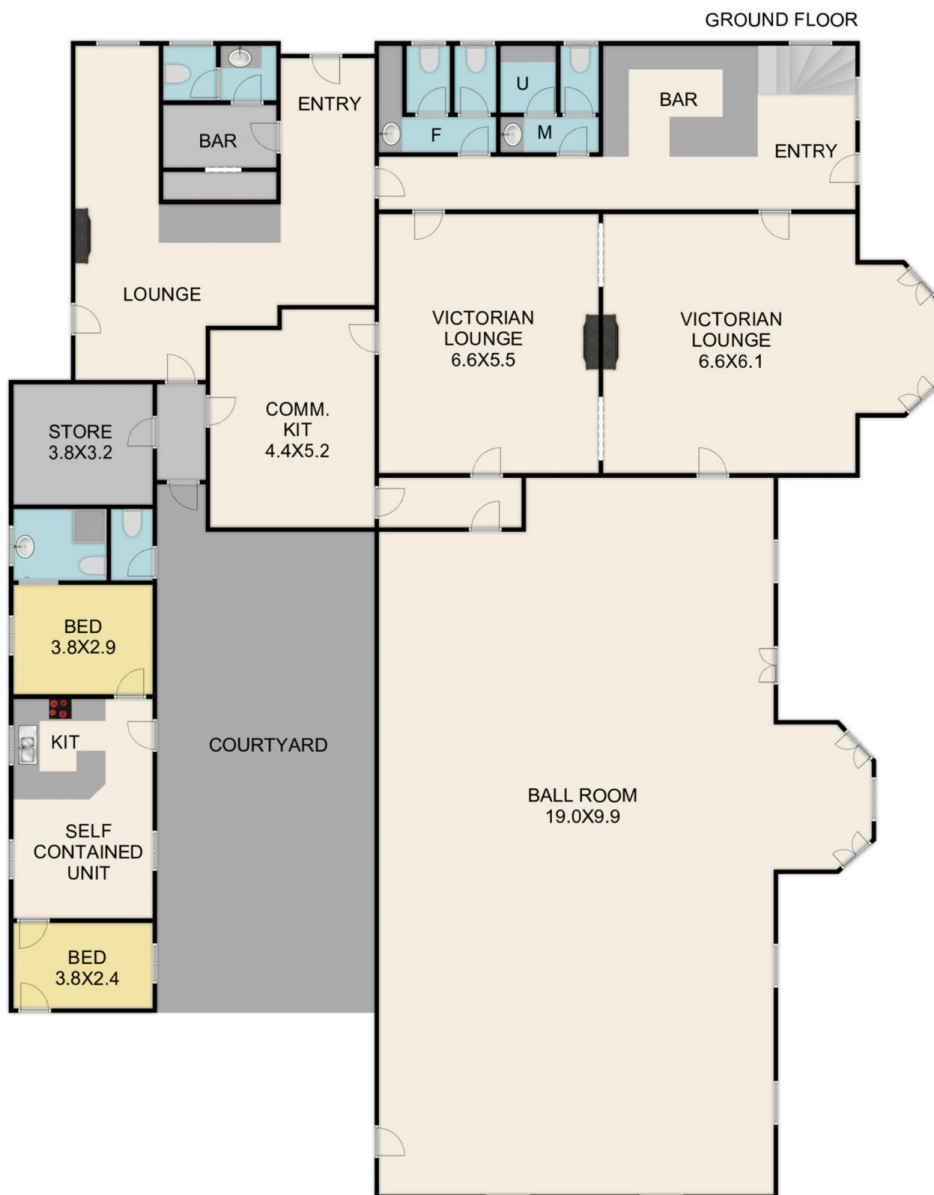


**Melissa Bell**  
03 5797 2500

# 111 High St Yea



FIRST FLOOR



GROUND FLOOR