



2 Moyle Street Yea VIC

4  1  1 

Beautifully restored Victorian home is a stunning reminder of days gone by. 4 spacious bedrooms with wardrobes and 2 with split systems. 12 foot ceilings and ceiling fans in all bedrooms. The bathroom is light and modern and the home has two toilets. The lounge/living room has been opened up to create a spacious living area with a new wood heater. The kitchen/dining/family rooms look out through large glass windows to the very generous back yard which contains a garden shed, dog run and single garage accessible from Meara Street. Close to shops, schools and all Yea's amenities,

Type : House

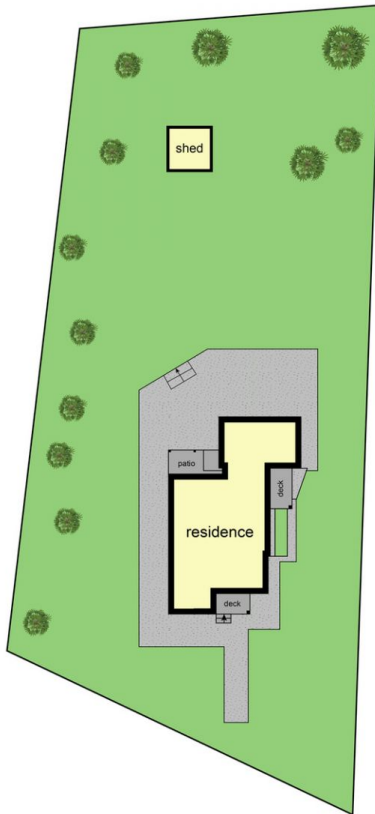
View : <https://www.nobleknight.com.au/lease/vic/shepparton-central-north/yea/residential/house/7275850>



Julie Birchall
03 5797 2500



Kim Wells
03 9735 5677



2 Moyle Street, Yea 3717
TOTAL APPROX. FLOOR AREA 141 SQ.M

Whilst every attempt has been made to ensure the accuracy of the floor plan contained here, measurements of doors, windows, rooms and any other items are approximate and no responsibility is taken for any error, omission, or misstatement. This plan is for illustrative purposes only and should be used as such by any prospective purchaser.