



## 11 Range Road Yea VIC

4  1 

For those looking for an opportunity to either restore or rebuild, this home offers an abundance of potential sitting on 743m<sup>2</sup> (approx) within close proximity to town.

The versatile floor plan offers four bedrooms, main bathroom and large living/ dining spaces with scope to add as you go.

Features include Coonara heating, garden shed and carport.

With Primary and Secondary schools, public transport, shops, parks and reserves nearby adding to the appeal of this wonderful property.

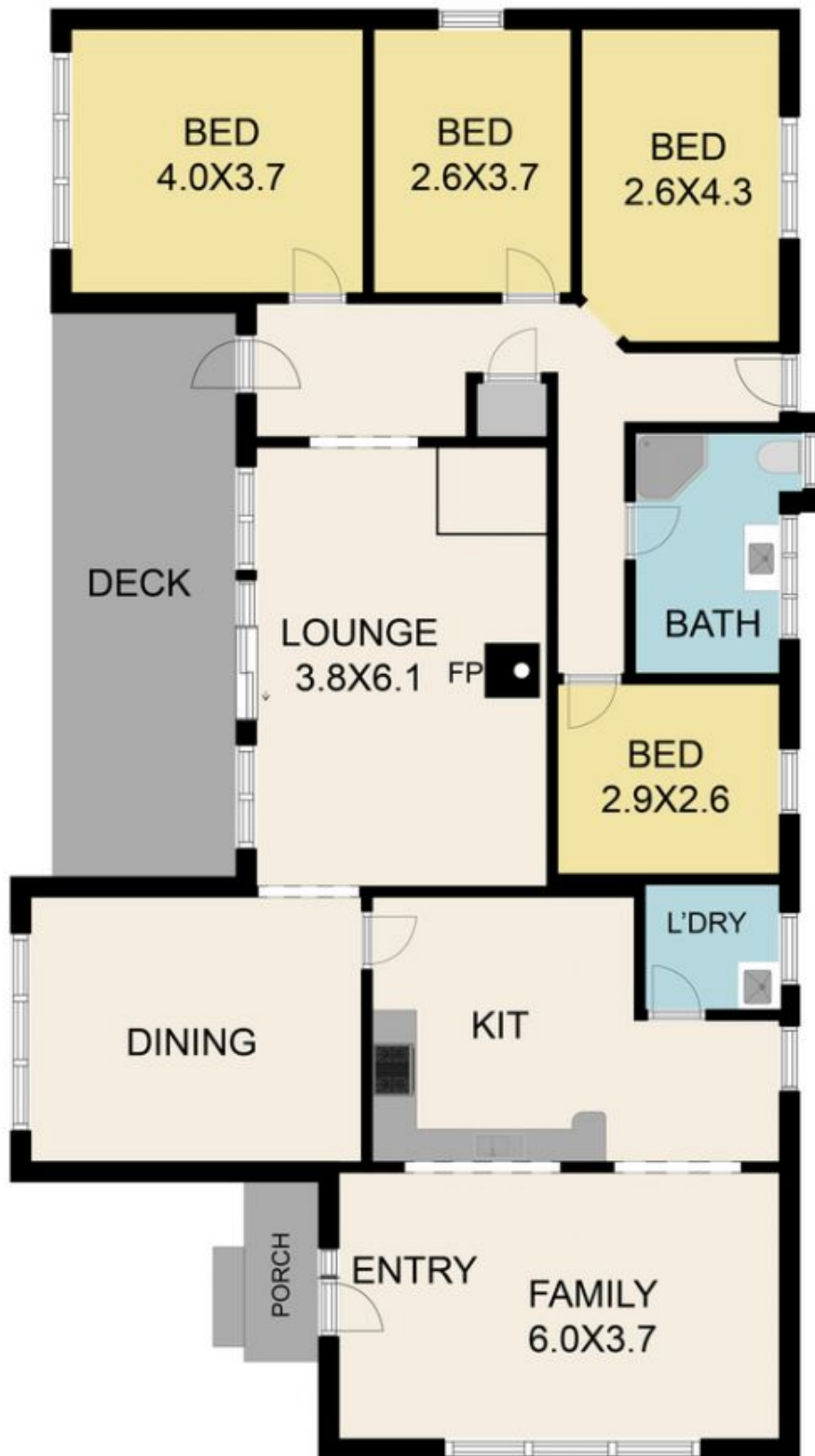
**Type** : House  
**Land Size** : 743 sqm  
**View** : <https://www.nobleknight.com.au/sale/vic/shepparton-central-north/yea/residential/house/7216311>



**Anthony Knight**  
03 5797 2500



**Melissa Bell**  
03 5797 2500



11 Range Road, Yea 3717

TOTAL APPROX. FLOOR AREA 159 SQ.M

Whilst every attempt has been made to ensure the accuracy of the floor plan contained here, measurements of doors, windows, rooms and any other items are approximate and no responsibility is taken for any error, omission, or misstatement. This plan is for illustrative purposes only and should be used as such by any prospective purchaser.