



### 33 Crown Point Ridge Chirnside Park VIC

4 3 2

This executive style four-bedroom home ticks all the boxes for family living. This large home set over two levels holds a presence on the street. As you enter the home you are greeted by a large entry with adjoining fourth bedroom, large spa, shower & sauna rooms. With direct access from the large garage into the entry, behind the garage is an oversized multipurpose space and storage room. As you walk up the stairs to the second storey you are greeted with open plan living with the kitchen that overlooks the family & dining zone and adjoining wet bar.

The impressive formal living room boasts floor to ceiling windows with views to the west and features a solid brick open fireplace. The main bedroom featuring walk in robe and ensuite also boasts floor to ceiling windows and views to the west. Bedrooms two and three are also on the second level and are accompanied by a family bathroom,

**Land Size** : 863 sqm  
**View** : <https://www.nobleknight.com.au/sale/vic/eas/t/chirnside-park/residential/house/6658118>

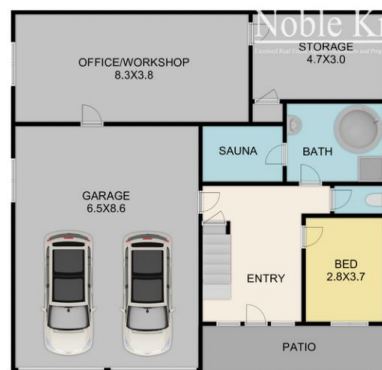


**Damian Ford**  
**03 9735 5677**

33 Crown Point Ridge  
**Chirnside Park**



FIRST FLOOR



GROUND FLOOR

Indicative only. Dimensions are approximate. All information contained herein is gathered from sources we believe to be reliable. However, we cannot guarantee its accuracy and interested persons should rely on their own enquiries.