



146 Carey Road Yea VIC

4 3 3

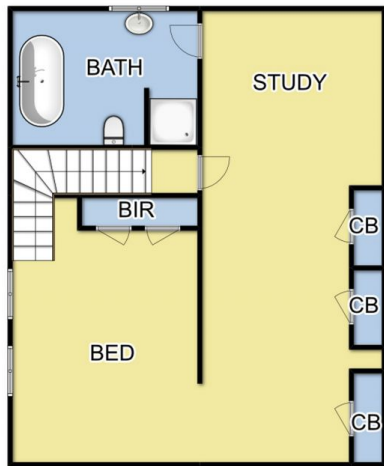
A magical lifestyle property offering on architectural designed feature property consisting of a 3 bedroom home, main with ensuite and parents retreat. Picturesque windows from every room. Modern kitchen with stainless steel appliances. Cosy wood heating and 4 x reverse cycle air conditioning units throughout, double glazed windows and solar system back to the grid are great aspects of design. Separate 1 bedroom cottage for extended family or bed and breakfast. Divided into 3 paddocks with electric fencing, machinery shed consisting of 8m x 16m as well. This property is truly a remarkable lifestyle opportunity with a great feeling of design living.

Land Size : 32374.9 sqm

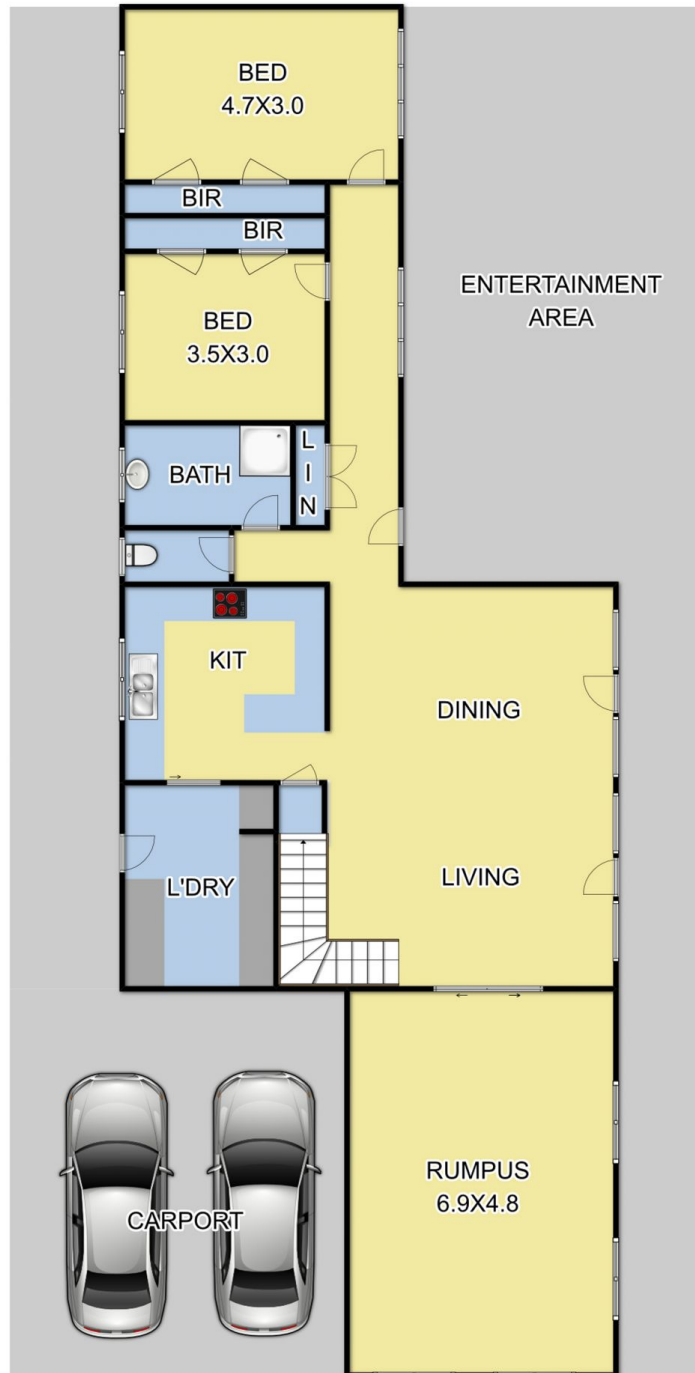
View : <https://www.nobleknight.com.au/sale/vic/shepparton-central-north/yea/residential/house/4632700>



Anthony Knight
03 5797 2500



FIRST FLOOR



GROUND FLOOR

Fixtures & Fittings are for display purposes only. Measurements Approx. Not to Scale.
Produced by Open2view.com.au



Produced by Open2view.com.au