



27 Arwon Court LILYDALE VIC

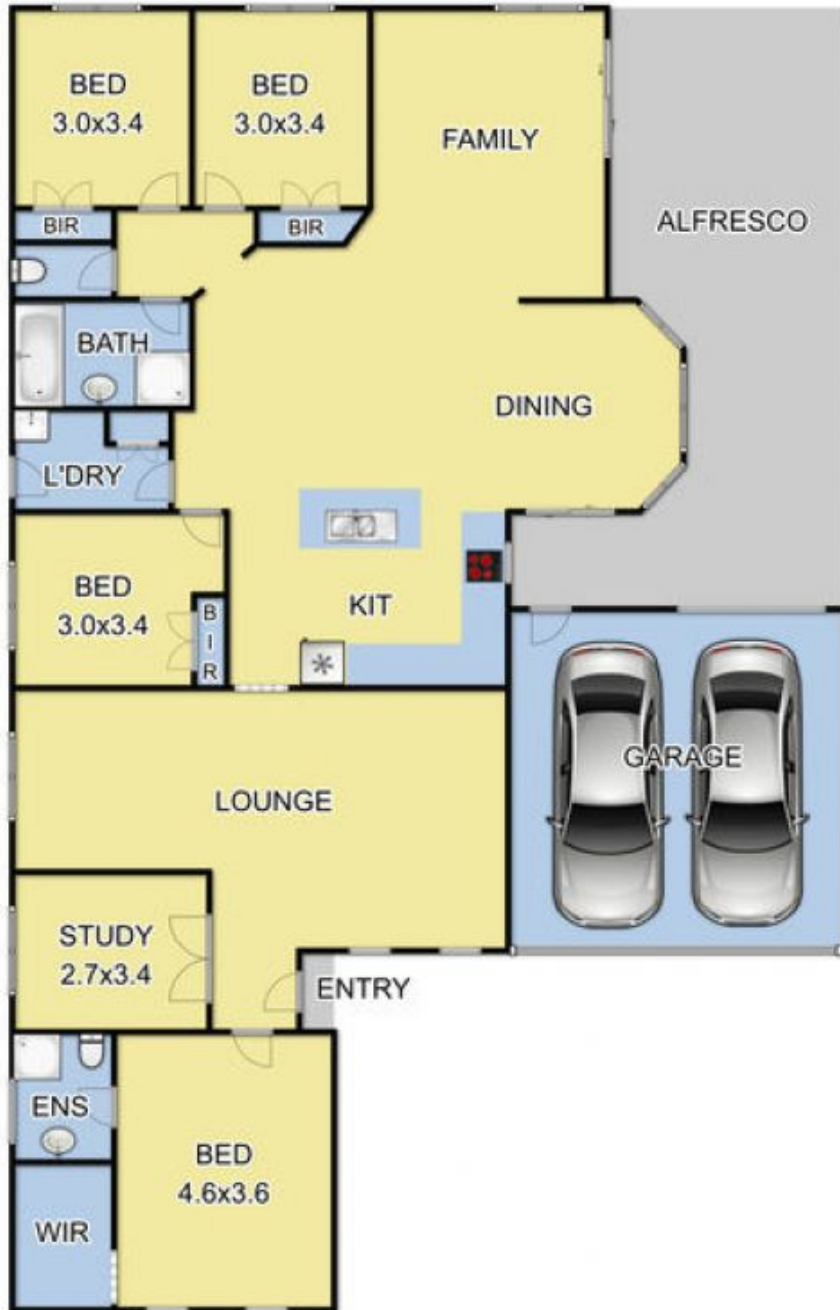
4 2 2

Often sought but rarely found, is this brick veneer house situated on 702 SQM (approx). With established gardens, located in the Gateway Estate, awaits this opportunity for the discerning buyer. This house features four spacious bedrooms plus study, all bedrooms with built in robes & the master with walk in robe & full ensuite. Space is evident throughout with a formal lounge with a gas log fire place & open plan dining/family room. The modern designed kitchen presents neutral tones with a featured splash back, Corian benchtops, stainless steel appliances and plenty of storage space. This extremely impressive property has all of your entertaining needs covered; with an outdoor alfresco area, overlooking the inground swimming pool with solar heating. Outside also offering a double car garage with remote entry & rear access into the backyard as well as a garden shed. Additionally, the home has gas ducted heated & 2 x reverse cycle air conditioners. All giving this

Price : \$ 886,000
Land Size : 702 sqm
View : <https://www.nobleknight.com.au/sale/vic/east/lilydale/residential/house/4083854>



Anthony Knight
03 5797 2500



Fixtures & Fittings are for display purposes only. Measurements Approx. Not to Scale.
Produced by Open2view.com.au