



### 28 Francis Street YEA VIC

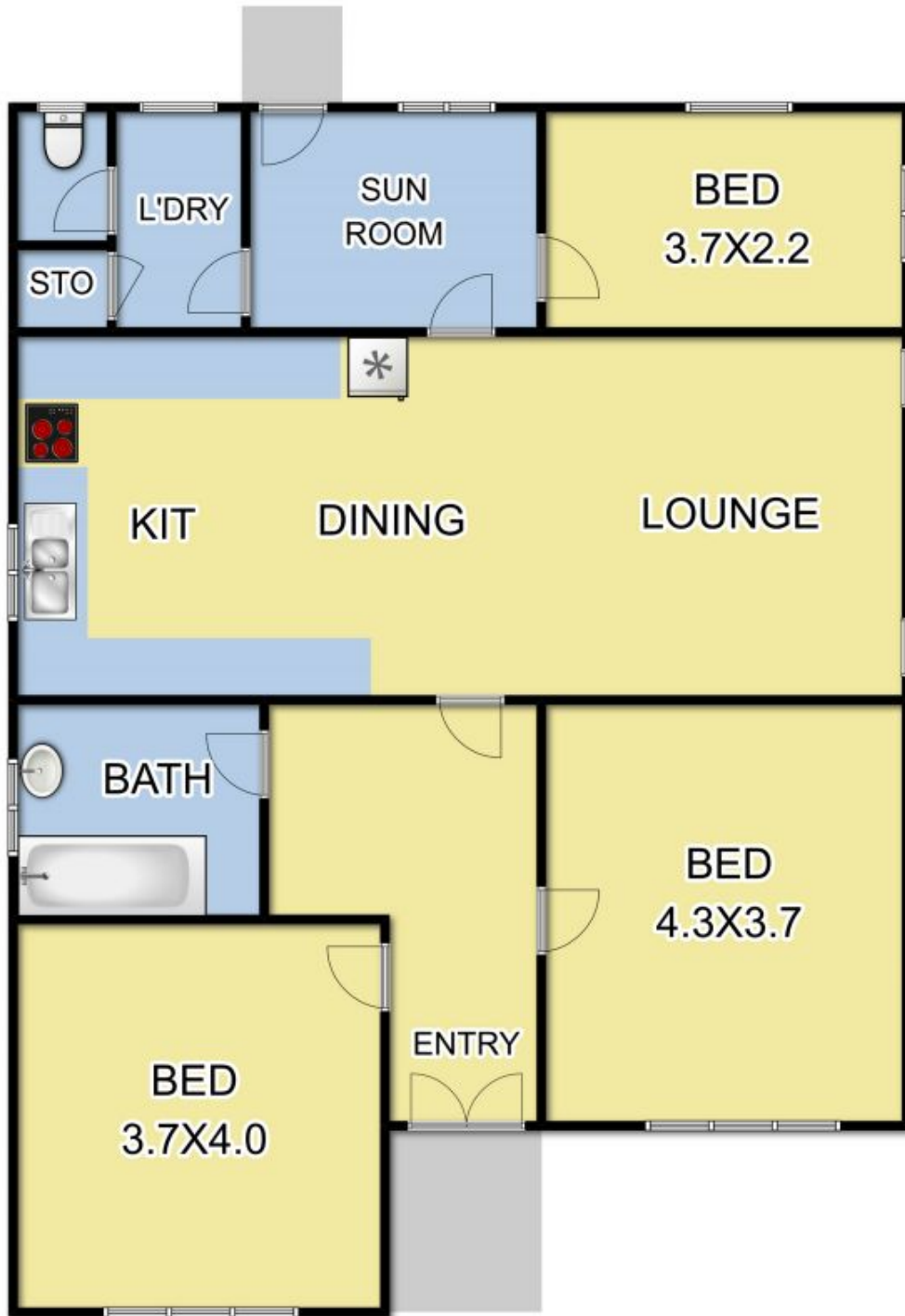
3 1 2

With its classic features, neat presentation and central location, this weatherboard home on a large residential block provides an exceptional opportunity for those looking to renovate, renew or possibly redevelop (STCA). Current accommodation includes 3 bedrooms and central bathroom, lounge and adjoining kitchen/meals, rear sunroom and separate laundry. Add to this original Art Deco ceilings, plus an expansive north-facing backyard with double garage, workshop and plenty of room to expand. Perfectly positioned in the heart of town, walking distance to the best of Yea including High Street shops and eateries, as well as town's local parks and schools.

**Type** : House  
**Land Size** : 1010 sqm  
**View** : <https://www.nobleknight.com.au/sale/vic/shepparton-central-north/yea/residential/house/3668697>



**Anthony Knight**  
03 5797 2500



Fixtures & Fittings are for display purposes only. Measurements Approx. Not to Scale.  
Produced by Open2view.com.au