



16/79 Bayswater Road CROYDON VIC

3 2 1

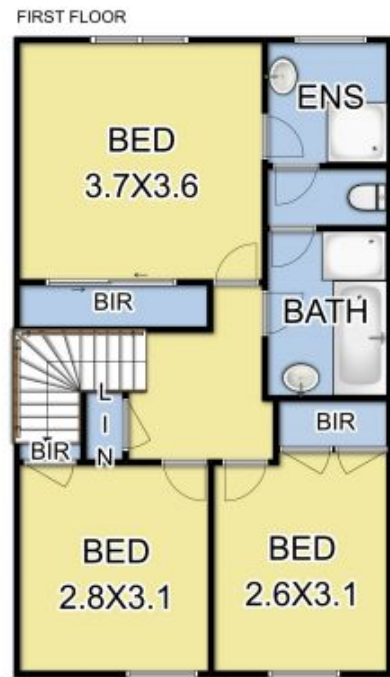
Welcome to this light, bright and vibrant townhouse in a prime Croydon location. Downstairs you are surprised by a spacious living and dining zone which is accompanied by a modern kitchen that overlooks the perfectly shaded rear yard. The home boasts 3 large bedrooms all with built in robes, two bathrooms and two toilets. To complement the house there is 3 parking spots plus a single garage that has double doors for rear access. A great sized backyard with a large tree that provides quality shade over the entertaining area. The location of this property is spectacular within minutes' drive to Ringwood East & Croydon Train Stations, Eastland Shopping Precinct and East Link Toll Way that connects you to Melbourne CBD within 30 minutes and is walking distance to Croydon Main Street, Leisure Centre, various walking tracks and sporting

Type : House
Land Size : 271 sqm
View : <https://www.nobleknight.com.au/sale/vic/east/croydon/residential/house/3540506>



Catherine Parker
0417 575 386

[For full version visit the website](https://www.nobleknight.com.au)



Fixtures & Fittings are for display purposes only. Measurements Approx. Not to Scale.
 Produced by Open2view.com.au