



4225 Melba Highway GLENBURN VIC

4 2 2

Exceptional find in the glorious Glenburn Valley.

"Kilner's Hill" divided into 7 main paddocks offers Kalatha Creek frontage with stock & domestic pumping rights.

Excellent fertile soils and approximately 750mm rainfall per annum.

The family home consists of 4 bedrooms, master has full ensuite and walk in robe, comfortable lounge/dining room with cosy wood fire.

Outdoor living amongst a fully established garden with amazing roses.

Carport, lock up shed 7mx9m plus machinery shed 10mx15m.

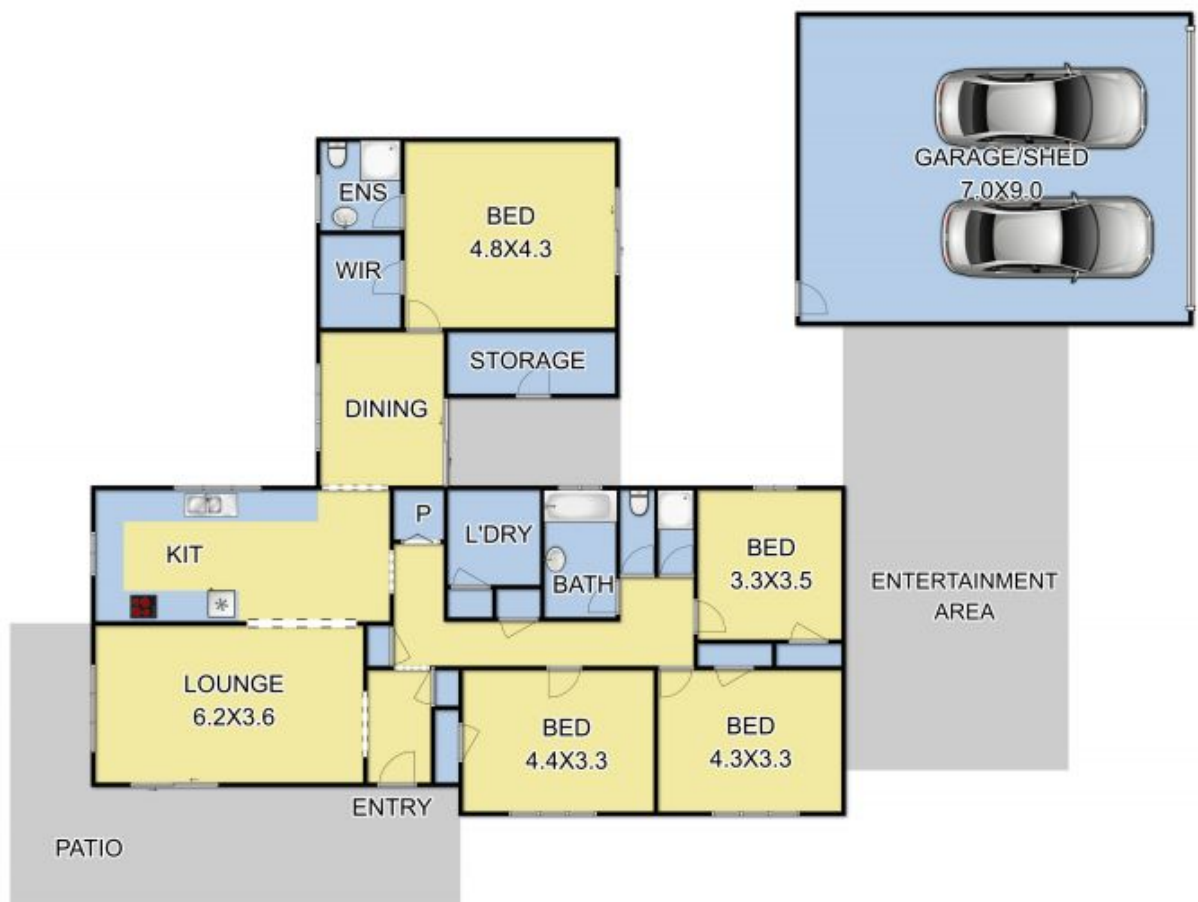
Ideal country lifestyle property would suit cattle or sheep

Type : House
Building Size : 22 Sqrs
Land Size : 136.8 Acres
View : <https://www.nobleknight.com.au/sale/vic/shepparton-central-north/glenburn/residential/house/2999706>



Anthony Knight
 03 5797 2500

[For full version visit the website](https://www.nobleknight.com.au)



Fixtures & Fittings are for display purposes only. Measurements Approx. Not to Scale.
Produced by Open2view.com.au